

FC Manager Instructions

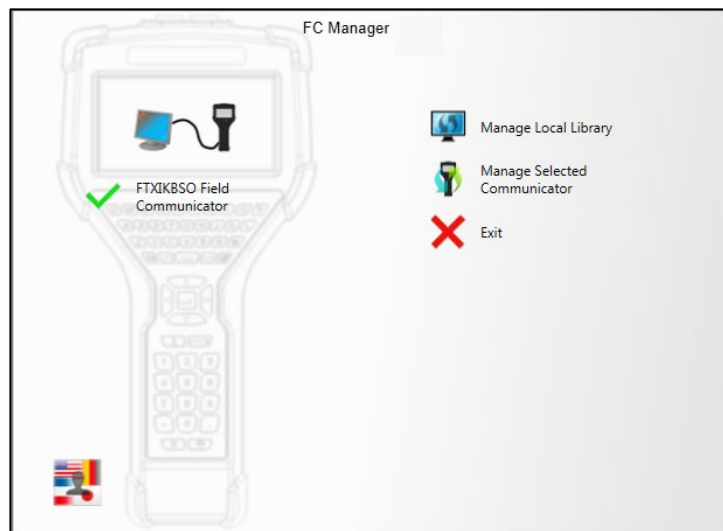
Overview of the dashboard window

Overview

This guide leads you through menus (options) available in FC Manager to help you navigate the program.

Opening FC Manager

After opening **FC Manager** on your computer, this dashboard window appears with one device connected to the computer.



Six areas in the dashboard window

In the dashboard window, you can:

1. View the status of connected devices,
2. Select a specific communicator (if there are more than one),
3. Change the language for FC Manager,
4. **Manage Local Library**
5. **Manage Selected Communicator**
6. **Exit** (FC Manager)

View the status of connected devices

One (1) device connected

The screen shot below of **FC Manager** indicates that a device is connected to the computer. The name of the device is listed below.



Three (3) devices connected

This example displays three (3) devices connected to the computer. The second device is the selected device.

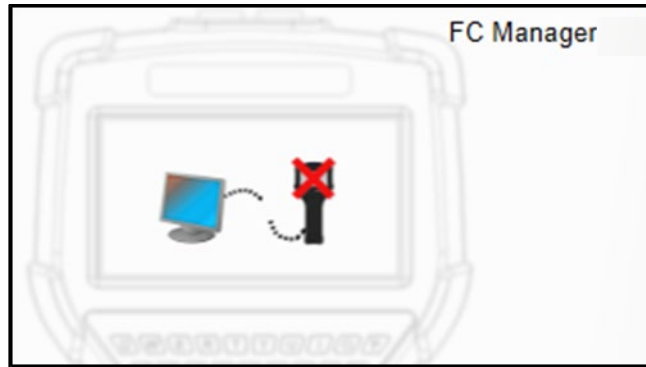


Note: FC Manager only displays *five* devices in this window.

View the status of a disconnected device

Disconnected

The screen shot below of **FC Manager** indicates the computer is not connected to a device.



Switching languages and Exit

Switching to another language

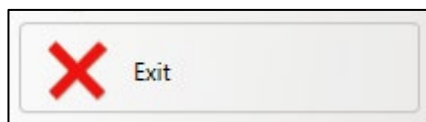
You may use this button to switch to another language on FC Manager. This button does not affect the language on the communicator.



Important: If you click this button to view it, you **must** select a language or this menu remains open as the top-most window when you switch to other programs in Windows.

Exit button

The Exit button closes the FC Manager program.



The Manage Local Library option

Overview of Manage Local Library

Explaining the phrase Local Library

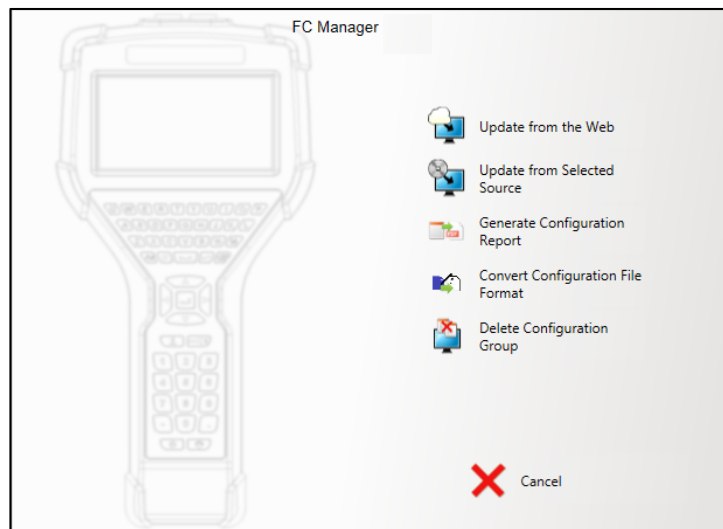
A local library is a location on your computer that collects:

- Configuration files,
- DD files, and
- System software files.

Six options

Clicking **Manage Local Library** displays these six (6) options:

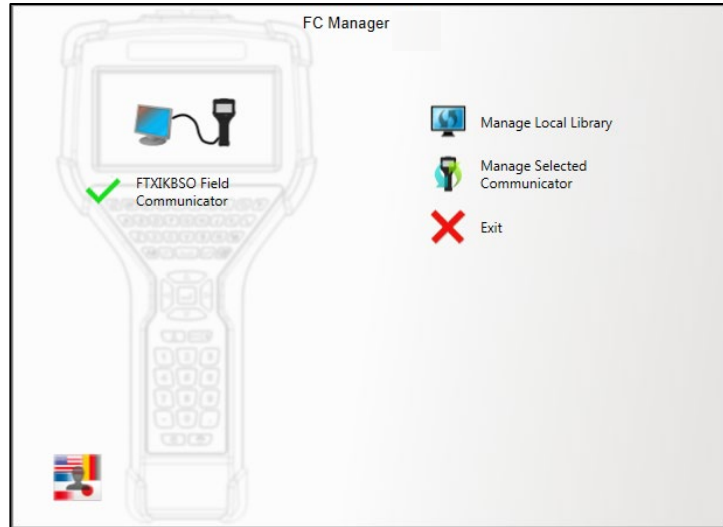
1. Update from the Web.
2. Update from Selected Source.
3. Generate Configuration Report.
4. Convert Configuration File Format.
5. Delete Configuration Group.
6. Cancel.



Is your Local Library up-to-date?

Manage Local Library—Up-to-date

The phrase **Manage Local Library** appears black to indicate all of your DD files and system files are up-to-date with the website.



Manage Local Library—out-of-date

The phrase **Manage Local Library** turns red to indicate you are out-of-date with the files on the website or FC Manager could not connect to the website.



Update from the Web

For those who can download files from the Internet

This option helps internet users keep up-to-date with the latest DD and systems files for the 5150.

What color are the words *Manage Local Library*?

You may click **Update from the Web** if it is red or black.

If these words are...	Then...
Red	Click Update from the Web to download the latest files.
Black	You do not need to click this option. FC Manager automatically checks for you and alerts you in the dashboard window. Your Library is up-to-date.

Update from Selected Source

For those who can't download files from the internet

This option gives you the choice of selecting USB drives, CD/DVDs, or network drives.

If you need new DD files and system files

Contact your local distributor for media options.

Generate Configuration Report

Create PDFs from Configuration Reports

Create a PDF document from any configuration stored in the FC Manager local library.

Convert HCF Configuration files

Convert HCF files into FC Manager files

- Locate any HCF files that you may have on your computer.
- Create a group folder to store these converted files.
- Convert the HCF files into a format compatible with the 5150 Communicator.
- Locate the converted files in the FC Manager local library.

Delete Configuration Group and Cancel

Delete Configuration Group

This removes unwanted configuration groups from your computer.

Cancel

Click **Cancel** to return to the preceding menu.

The Manage Selected Communicator option

Select a communicator

Select a communicator

Select one of the connected communicators and click **Manage Selected Communicator** to view five (5) options. See the screen shot below for an example of a selected device.



Note: A communicator is always selected unless there is no connection.

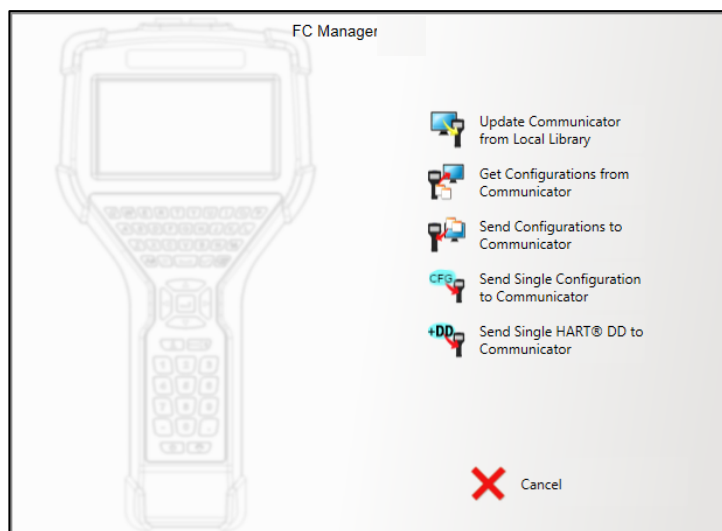
Overview of options

Six options

In the screen shot below, you can see the six (6) options available to you after you've selected a communicator and selected

Manage Selected Communicator:

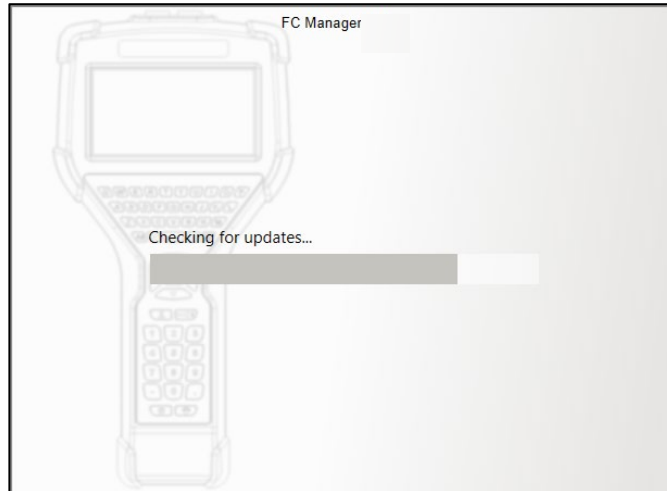
1. Update Communicator from Local Library.
2. Get Configurations from Communicator.
3. Send Configurations to Communicator.
4. Send Single Configuration to Communicator.
5. Send Single HART® DD to Communicator.
6. Cancel and return to the dashboard.



Updating from Local Library

Update Communicator from Local Library

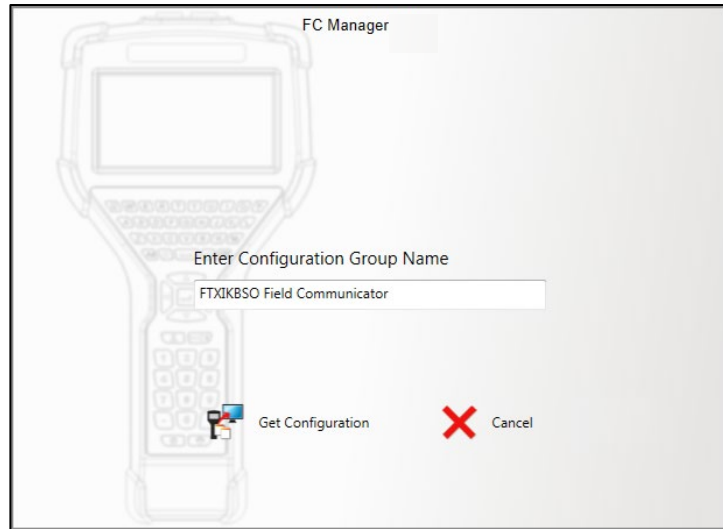
This option compares HART® DD files and system software in the local library on your computer with the communicator. It then gives you the option to update either file type, or both.



Get configurations from your communicator

Get Configurations from Communicator

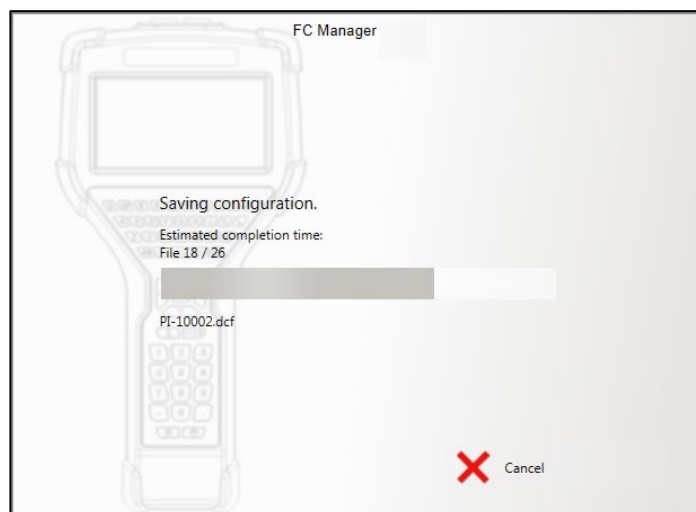
You created these configurations on the selected communicator. This option retrieves all configurations from the communicator to the local library on your computer.



Note: The default name in the **Enter Configuration Group Name** field is the name of the selected communicator. You can rename it.

Get configuration

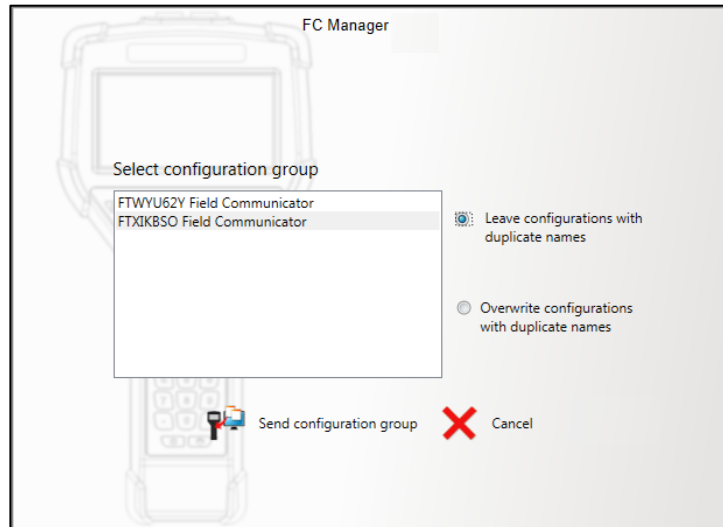
After clicking the **Get Configuration** option, FC Manager begins saving the selected configuration to your computer.



Send configurations or HART DD file

Send Configurations to Communicator

You can send a group of configurations from your computer to any selected communicator.



Options for sending configurations

After you select a configuration group on the left side, then you need to select one of two options on the right side:

- Leave configurations with duplicate names
- Overwrite configurations with duplicate names

Send or cancel

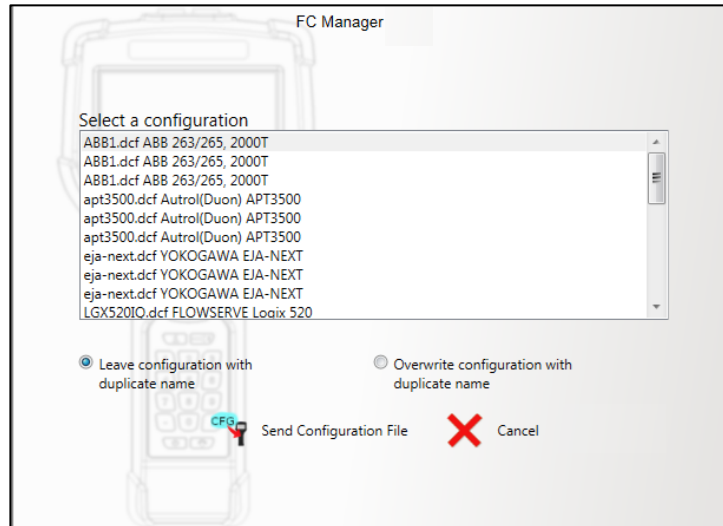
Once you've selected a configuration group and the Leave or Overwrite options, you have two more choices:

- Send configuration group
- Cancel (to return to the previous menu)

Send Single Configuration to Communicator

You can send a single configuration from your FC Manager local library on the computer to any selected communicator.

- Leave configuration with duplicate name
- Overwrite configuration with duplicate name



Send Single HART® DD to Communicator

You have the option to select one DD file to send to the communicator. You can send this DD file from any folder on your hard drive, CD/DVD, USB Drive, or network drive.

DD file types

Selecting a proper DD file type

If the file you select a file that is not a proper DD file, an error message appears. See the screen shot below for DD file types.

